



BUCKLAND

Reaching Beyond Borders

An aerial photograph of a port facility. In the foreground, a large Mexican flag flies on a tall pole. The middle ground is dominated by a massive container yard filled with stacks of colorful shipping containers. A large container ship is docked at a pier, with two large gantry cranes positioned over it. In the background, the sea is visible with several other ships, and a hilly coastline is in the distance under a blue sky with light clouds.

SUPPLY CHAIN STRATEGY: SECURING HOT SHIPMENT RELEASES AT MEXICAN AIRPORTS

OUR SPEAKER



LUIS BENITO ZENIL ARAIZA
SOUTHERN BORDER OPERATIONS DIRECTOR

 bzenil@buckland.com



BENITO ZENIL

SOUTHERN BORDER OPERATIONS DIRECTOR

With more than 18 years of experience in international trade, primarily focused on customs clearance operations across multiple modes—air, ocean, and ground—he has developed correspondent networks, provided advisory services in customs compliance, and led the development and execution of strategic 3PL plans and supply chain consulting for clients.

He also has extensive experience implementing operational frameworks and solutions aimed at ensuring supply chain continuity for critical shipments, including charter and hand carrier movements.

MX Hot Shipments 2026: Charters and Hand Carriers Recommendations

AGENDA

Charter & Hand Carrier Shipments

01

Know your MX Airports

02

Operations Documents

03

Main considerations for Customs Clearance

04

Customs Operations

05

CHARTER & HAND CARRIER SHIPMENTS

- **Charters**; consider critical 'hot shipment' with a high cost, usually dedicated air shipments.
- **Hand Carrier**; transport of goods via commercial flights managed by passenger

Determine if a shipment must be charter or hand carrier is decided on the cost-benefit of air-cargo based on volume of package and critically of delivery



A person's hand is shown writing on a notepad with a pen. The background features a faint, light-colored outline map of the United States. The overall image has a blue-tinted, semi-transparent overlay.

KNOW YOUR AIRPORTS

MX AIRPORTS

AIRPORTS

MX Customs law, Appendix 1 of Annex 22, list all Mexican airports and interior customs ports where foreign trade transactions can customs clear:

- Over 38 customs in different Mexican airports
- 13 international airports in main cities
- 11 main airports that handle charter operations
- 8 main airports that manage hand carrier operations

Selection criteria for Airport:

1. Location Site-to-Airport
2. Availability of International flights and cargo routes
3. Hours of operation
4. Airport management flexibility



MX AIRPORTS

MAIN AIRPORTS

Customs Name	Charter	HC
27 AEROPUERTO INTERNACIONAL PLAN DE GUADALUPE, RAMOS ARIZPE, COAHUILA DE ZARAGOZA.	★	
47 AEROPUERTO INTERNACIONAL DE LA CIUDAD DE MÉXICO.	★	★
52 AEROPUERTO INTERNACIONAL GENERAL MARIANO ESCOBEDO, APODACA, NUEVO LEÓN.	★	★
73 AEROPUERTO INTERNACIONAL PONCIANO ARRIAGA, SOLEDAD DE GRACIANO SÁNCHEZ, SAN LUIS POTOSÍ.	★	★
84 AEROPUERTO INTERNACIONAL DE GUANAJUATO, SILAO DE LA VICTORIA, GUANAJUATO.	★	★
48 AEROPUERTO DE GUADALAJARA, TLAJOMULCO DE ZÚÑIGA, JALISCO.	★	★
64 AEROPUERTO DE QUERÉTARO, EL MARQUES Y COLÓN, QUERÉTARO.	★	★
65 AEROPUERTO DE TOLUCA, TOLUCA, ESTADO DE MÉXICO.	★	★
75 AEROPUERTO DE PUEBLA, PUEBLA	★	
84 AEROPUERTO DE GUANAJUATO, SILAO, GUANAJUATO	★	★
85 AEROPUERTO INTERNACIONAL FELIPE ANGELES, ESTADO DE MEXICO	★	★



A person is shown from the side, writing on a document with a pen. The background features a faint, light-colored map of the United States. The overall scene is dimly lit with a blue tint.

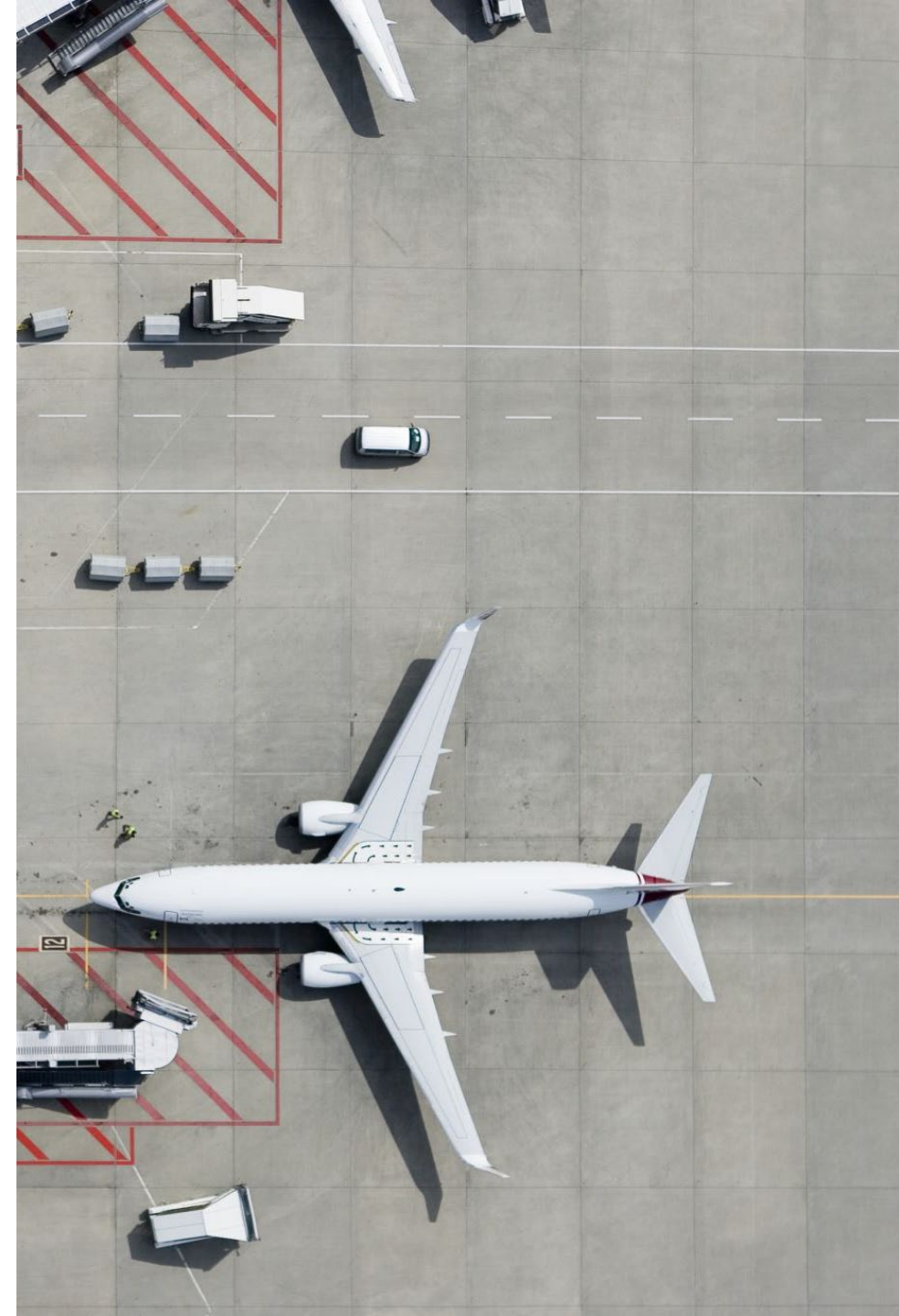
SHIPMENT DOCUMENTS

CHARTER DOCUMENTS

DOCUMENTS VS INFORMATION

To safely secure shipment there is a need to exchange documentation and information prior ETA. The list of documents and information needed set the success rate for processing customs clearance:

DOCUMENTS	INFORMATION
Commercial Invoice PDF & XML // Invoice(s)	Plane Tail Number
Packing List	Flight number
AWB	Carrier: CAAT, Gafete
CCP (complemento carta porte)	Gross Weight
	Number of packages
	Operator information



HAND CARRIERS DOCUMENTS

DOCUMENTS VS INFORMATION

To safety secure hand carrier shipment there is a need to exchange documentation and Information prior Passenger flight arrival.

The list of documents and Information needed set the success rate for processing Customs clearance:

DOCUMENTS	INFORMATION
Commercial Invoice PDF & XML // Invoice(s)	Flight number
Packing List	Number of suitcases/packages
Passenger itinerary information	Gross Weight
Passport	Incoming airport
Pink slip / white slip	Pink slip

Hand carriers with MX customs pedimento must be pre-alert (including documents), 5-6 hours before flight arrival





OPERATIONAL FLOW AND MX CUSTOMS OVERTIME

CHARTER & OT

CHARTER DOCUMENTATION

By nature, charters are considered critical: Securing OT is a critical step.

Efficient communication, coordination and flow of Information mitigate risk in the operation.



HAND CARRIER

HAND CARRIER PROCESSING

Hand Carrier Operations processing as an air-cargo alternative has its own set of steps and regulations to comply with, starting with MX IOR been OEA certified companies.

Efficient communication, coordination and Flow of Information mitigate risk in the operation.



CHARTERS

MX CUSTOMS OVERTIME

Securing overtime with MX Customs is a process rule by MOA. This regulation provide the steps, times and conditions to submit overtime via VUCEM with 2:01 hrs before close of Customs Hours of Operations at determine Airport.

To submit custom overtime:

1. A valid Pedimento/Remesa
2. Set request of OT Hours of Operations*
3. Freight driver Information (Transportation company details)
4. Valid AWB/BL/flight itinerary

**Considering weekly overtime request is an option*

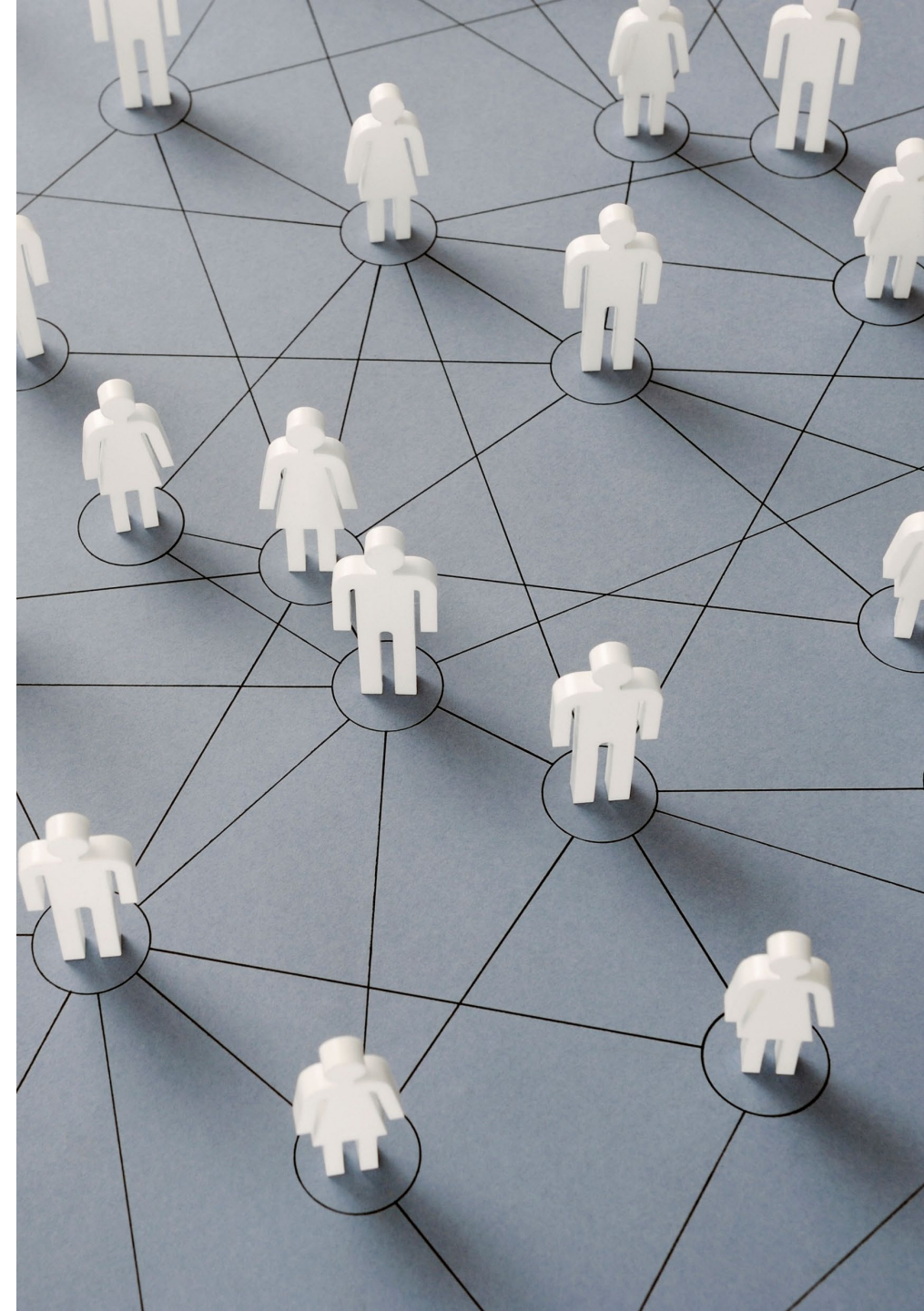


PRE-ALERTA

SHIPMENT COORDINATION

At Buckland we suggest (5) steps to efficiently coordinate a shipment and increase success rates for both: Charters and Hand carriers

1. Communicate ***potential*** shipment since it's conception.
2. Define timelines for processing ***based*** on local Customs (airport)
3. Get document package ready with instructions
4. Coordinate Traffic teams + MX Broker + Charter line
5. Secure Overtime





MAIN CONSIDERATIONS

MAIN CONSIDERATIONS FOR CHARTER & HC



AIRPORT SELECTION

KNOW YOUR OPTIONS, HOURS OF
OPERATION AND REQUIREMENTS



APPROVED OVERTIME

INCREASE YOUR CHANCES TO HAVE
A SUCCESSFUL OPERATION



REVERSE TIMELINES

COORDINATE TIMELINES IN REVERSE
FROM ETA TO SHIPMENT CREATION OR
FROM CUSTOMS HOURS

MAIN CONSIDERATIONS FOR CHARTER & HC



USE CONSOLIDATED PEDIMENTOS

REDUCE TIME PROCESSING AND RISK
OF SYSTEM FAILURES

USE YOUR BENEFIT AS FOREIGN
TRADE ENTITY



STRATEGIC PARTNERSHIPS

SECURE TRUSTWORTHY PARTNERSHIPS
WITH CHARTER LINES, MEXICAN
BROKERS AND FREIGHT COMPANIES



COMUNICACION

COMUNICACION

COMUNICACION

STATUS IS STATUS



CONTACT US

BG TSAIR@buckland.com

arojas@buckland.com

bzenil@buckland.com

St. Thomas:

73 Gaylord Rd.
St. Thomas, Ontario,
Canada
N5P 3R9

(519) 631-4944

Mississauga:

1645 Bonhill Road, Unit 3
Mississauga, Ontario,
Canada
L5T 1R3

(905) 565-9363

Windsor:

2085 Industrial Dr.,
Suite 100
Windsor, Ontario, Canada
N9C 3R9

(519) 966-9359

Detroit:

2810 West Fort Street,
Suite 119
Detroit, Michigan, USA
48216

(313) 963-0600

Port Huron:

835 24th Street
Port Huron, Michigan,
USA
48060

(810) 966-1480

Laredo:

10302 Interstate 35
Laredo, Texas,
USA
78045

(956) 724-4463

Southfield:

26877 Northwestern Hwy
Southfield, Michigan,
USA
48033

(248) 281-6055

El Paso:

12425 Mercantile Ave,
Bldg 4, suite100
El Paso, Texas, USA
78045

(956) 724-4463



www.buckland.com

USA Office:

(888) 806-1156
(810) 966-1480

Canadian Office:

(800) 991-4944
(519) 631-4944